



PEPFAR

U.S. President's Emergency Plan for AIDS Relief

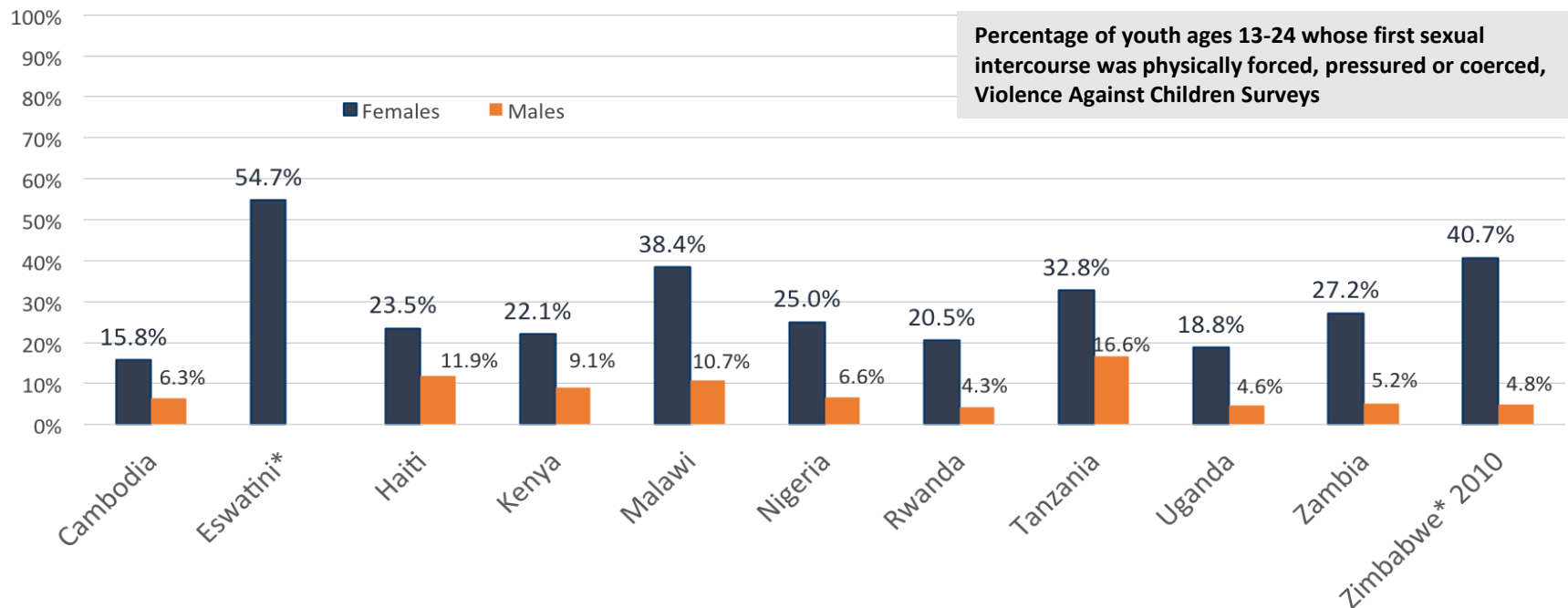
A Social Ecological Approach to Preventing Violence Against Children

Janet Saul, PhD
May 29th, 2019

15 YEARS OF SAVING LIVES THROUGH AMERICAN GENEROSITY AND PARTNERSHIPS

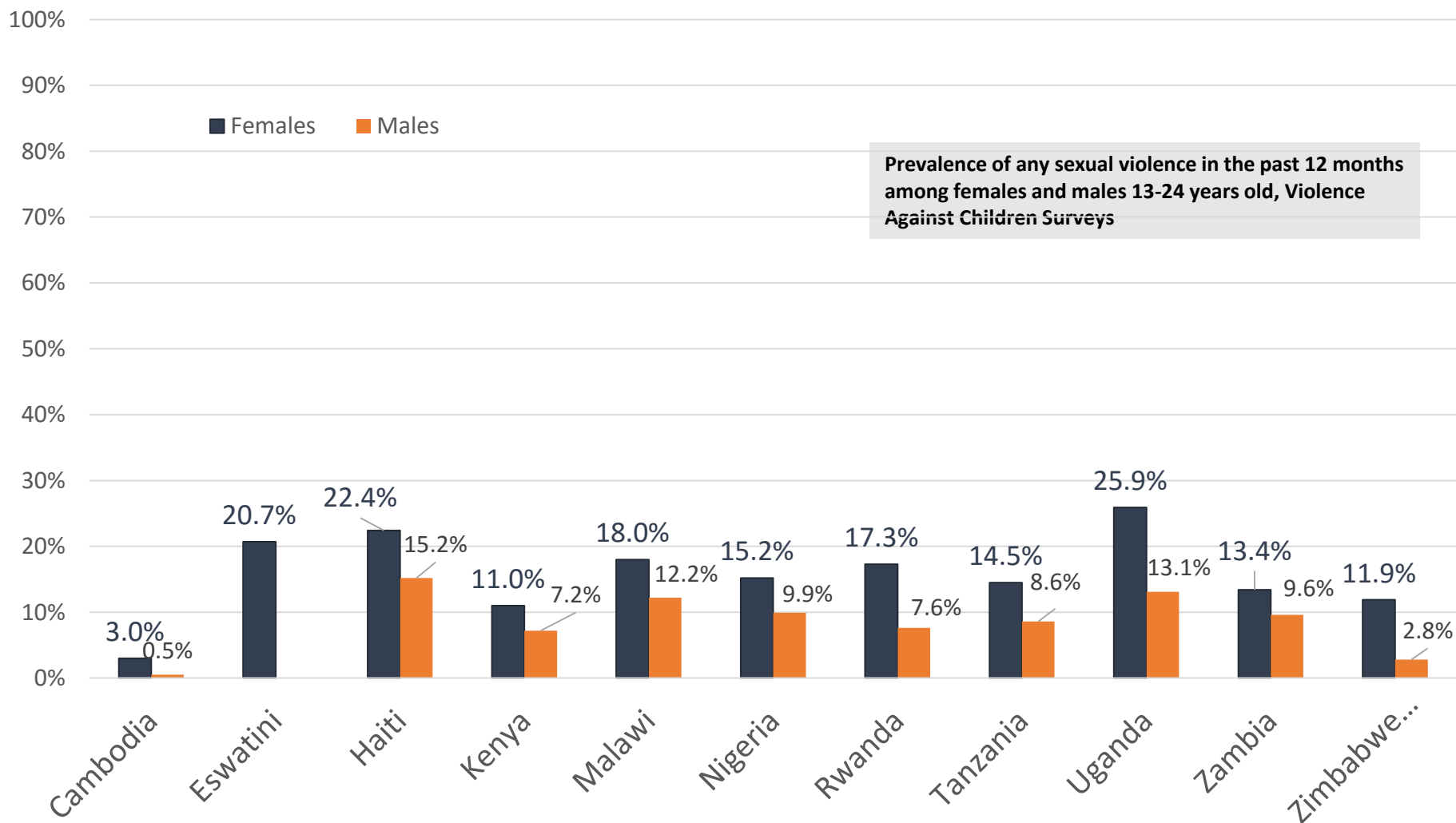
#PEPFAR15

Forced or coerced sex at sexual initiation among females and males ages 13-24



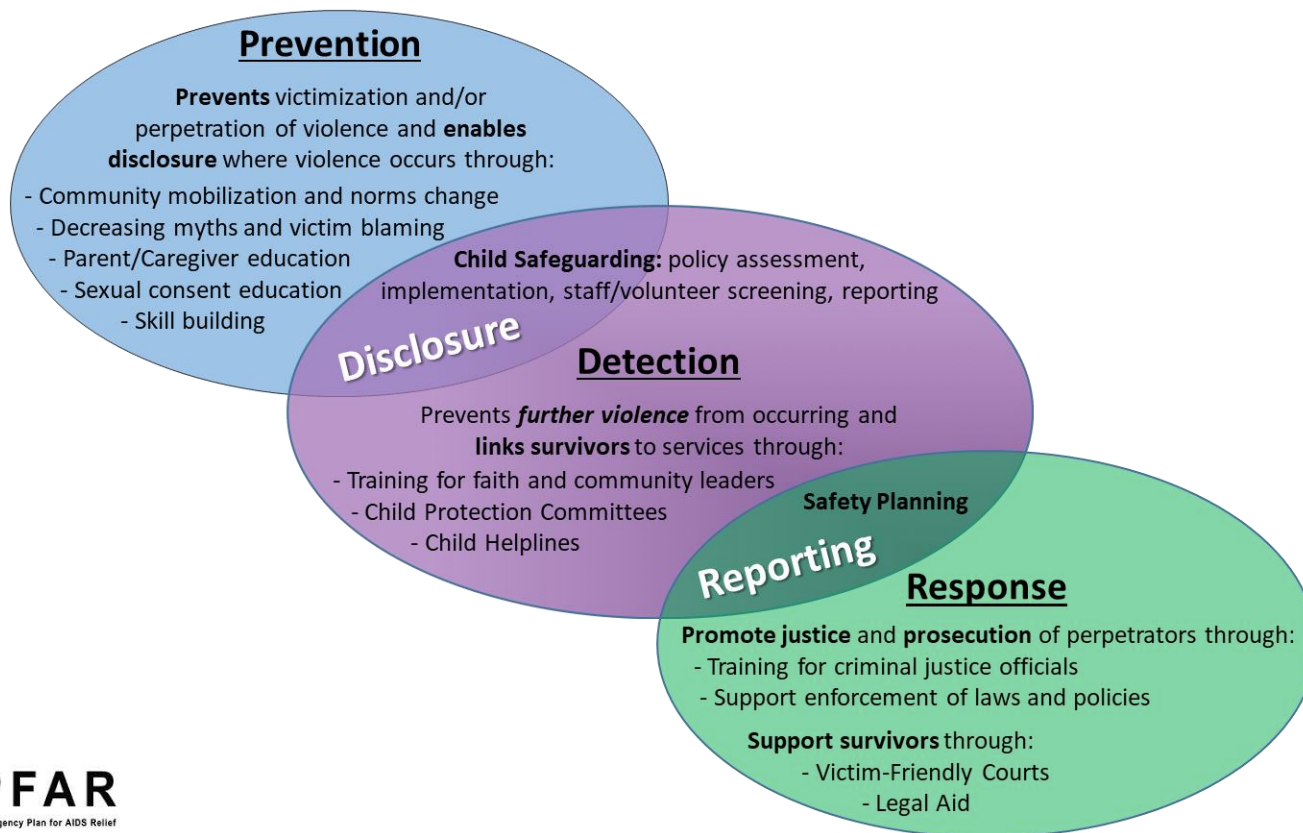
*Data only available for ages 18-24 for Zimbabwe; data only available for females in Eswatini.

Sexual violence in the past 12 months among females and males ages 13-24

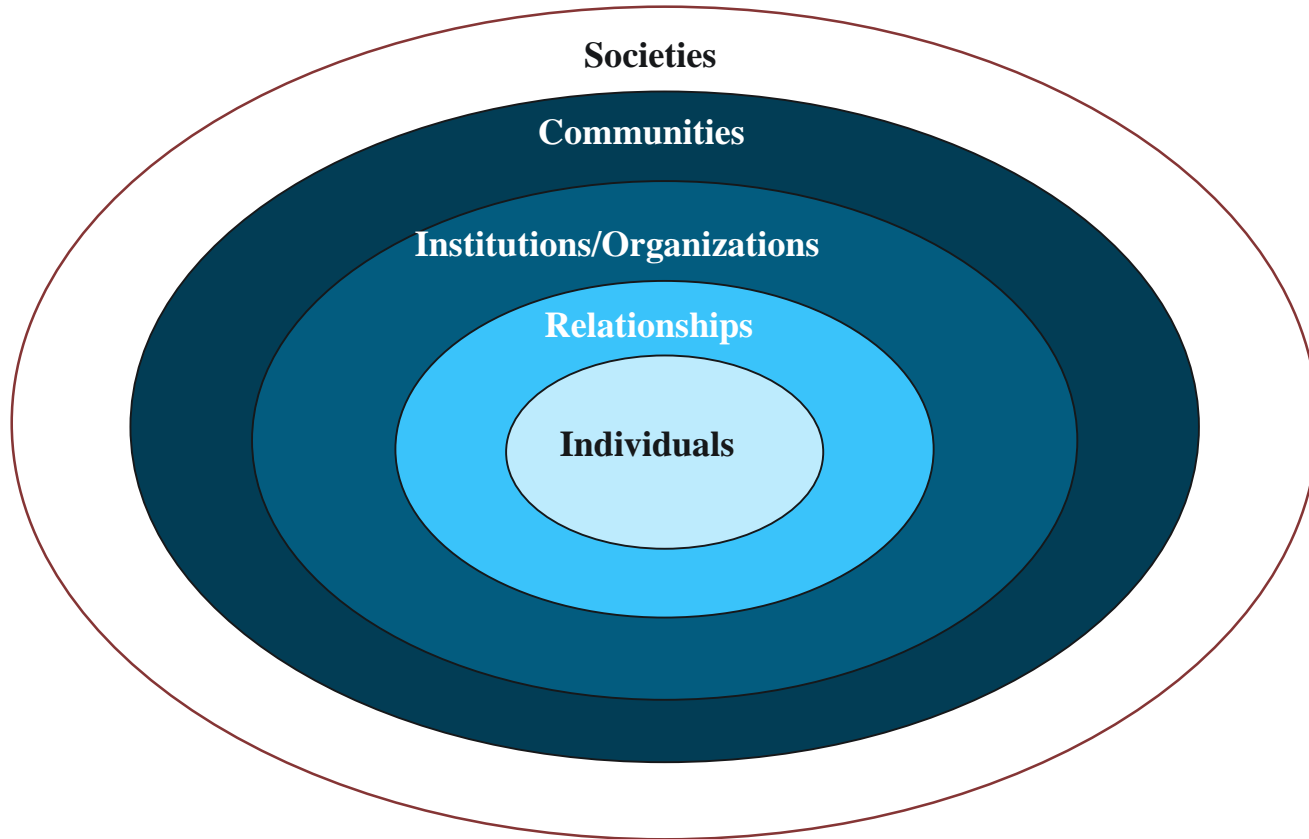


*Data only available for ages 18-24 for Zimbabwe; data only available for females in Eswatini.

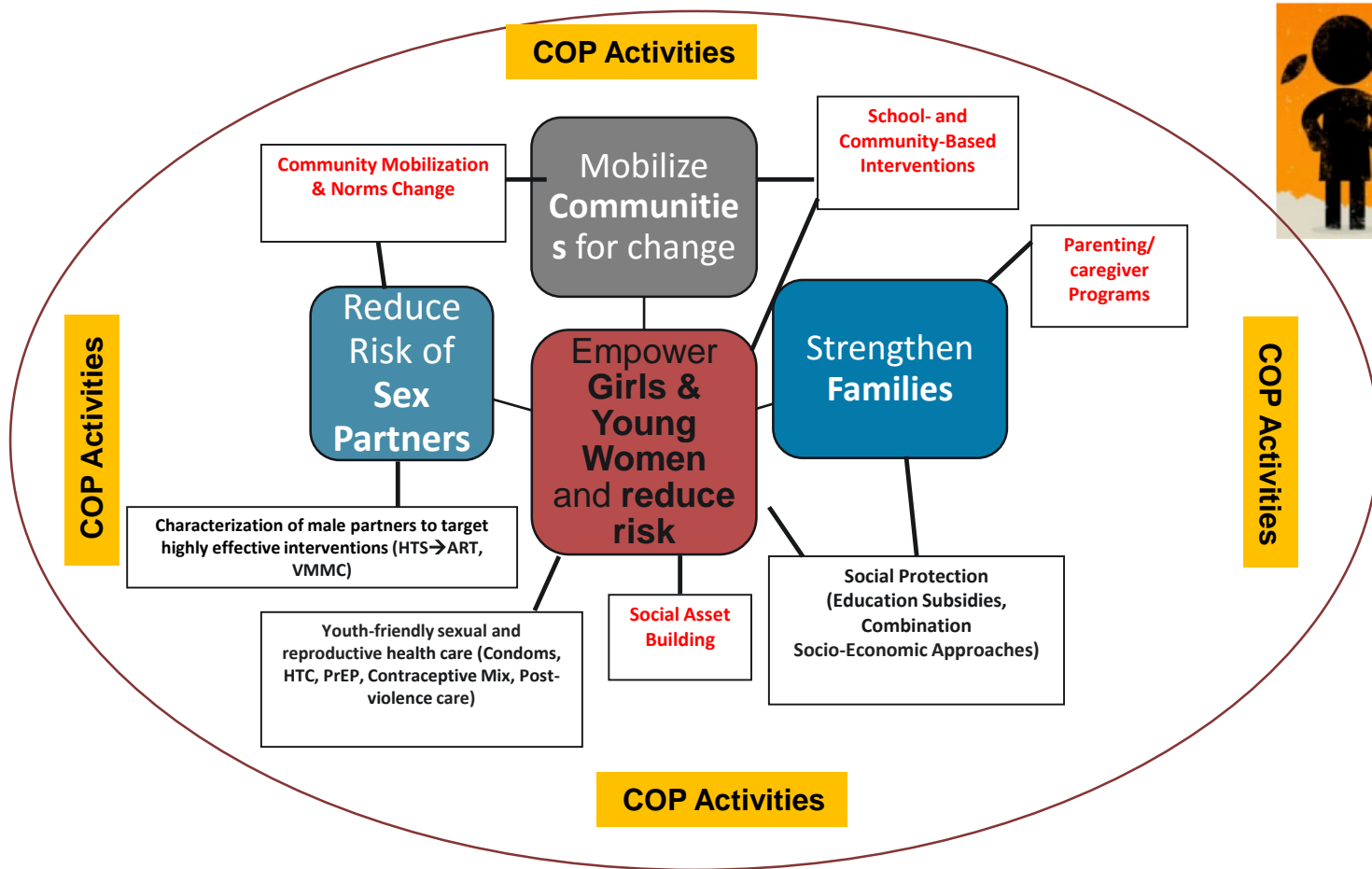
Violence Prevention and Response Continuum



Circles of Protection – Levels of the Social Ecology



DREAMS Core Package





PEPFAR

U.S. President's Emergency Plan for AIDS Relief

THANK YOU!!

15 YEARS OF SAVING LIVES THROUGH AMERICAN GENEROSITY AND PARTNERSHIPS

#PEPFAR15